

\$725,000

Halswell

Lot 13, 7 Franco Road



for sale

dwelling size

190 m²

section size

489 m²



Perfect for families and entertaining, this home is designed to maximise space and sun. The open plan living, dining and kitchen area is the centre of the home, and offers a great outlook onto the easy care section. With # double bedrooms, a family bathroom and ensuite, the house combines great functionality with a stylish feel. The home has an internal access double garage, and the section is fully landscaped with all fencing and driveways included.

The development will deliver a lifestyle choice unlike any other in Christchurch. Centered around living streets, the community can take ownership of shared open spaces, orchard trees, edible plants and herbs for picking. This unique setting cultivates a strong sense of belonging and environmental sustainability that complements the range of homes on offer.

more features.






- ✦ Fairview Architectural Suite Windows
- ✦ Gas Fire
- ✦ Stone Benchtop
- ✦ European Tapware
- ✦ Tiled Shower
- ✦ Walk in Pantry

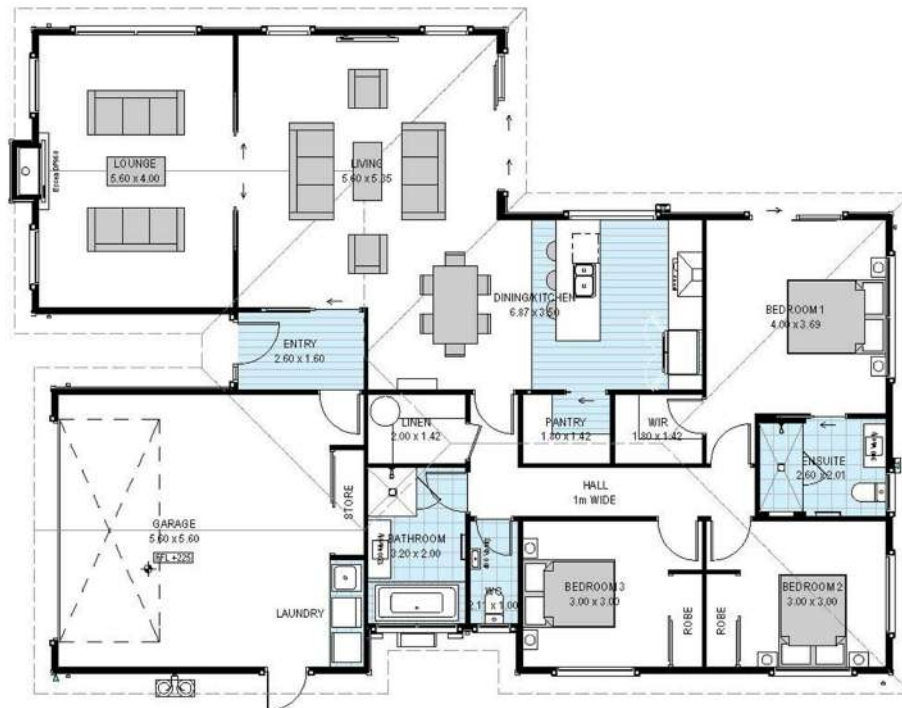
Auckland • Hamilton • Tauranga • Marlborough • Nelson • West Coast • Canterbury • Central Otago

bringing you **more.**

03 354 0166 **mikegreerhomes.co.nz**

Halswell Commons Lot 13, 7 Franco Road

dwelling size	section size	3	2	2	2	2
190 m ²	489 m ²					

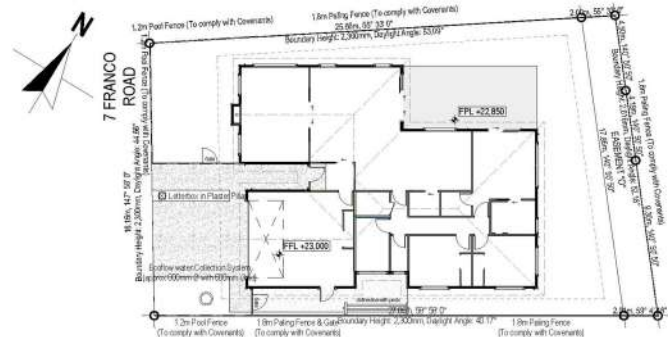


+ **Free Design**
With over 700 base plans you may be looking at the one that's absolutely perfect for you, or you may wish to modify it to make it your own. Our highly experienced team of in-house designers can customise each plan to suit your individual site, budget and style.

+ **Fixed Price**
Our fixed price contracts are just that – fixed. There are no surprises – all landscaping, fencing, driveways and floor coverings are included. You pay a deposit and nothing further until completion.

+ **Quality Assurance**
Our reputation for quality is as important to us as it is to you. With 25 years of award-winning experience, a team of fully qualified contractors, and a comprehensive Quality Assurance programme, you can trust that your home is constructed with care and professionalism.

+ **Specifications**
Our wide array of specifications is where your home truly comes to life. Choose from a range of fixtures and fittings from today's most reputable brands. Let your imagination run wild or if you prefer we can suggest options to suit your needs and style.



Disclaimer While every reasonable effort has been made by Mike Greer Homes to ensure the information correctly illustrates the dwelling and section, this material may only be used by the Purchaser for illustrative and guidance purposes. Mike Greer Homes accepts no responsibility for any differences, errors or omissions which may become apparent during or on completion of the dwelling.