

\$599,000

mikegreerhomes

Halswell

Unit 2, Lot 6 Halswell Commons



for sale

dwelling size

164 m²

section size

294 m²

home
and
land

This spacious home has a thoughtful floor plan that combines three double bedrooms, two bathrooms and an ensuite, with a superb open plan living area. The well-appointed kitchen flows nicely with the North facing dining and living areas to create an overall space that opens out onto the outdoor entertaining area. Finished with quality fixtures and fittings throughout, this home offers great value and an easy lifestyle.

The development will deliver a lifestyle choice unlike any other in Christchurch. Centered around living streets, the community can take ownership of shared open spaces, orchard trees, edible plants and herbs for picking. This unique setting cultivates a strong sense of belonging and environmental sustainability that complements the range of homes on offer.

more features.

- ✦ After Sales Care Program
- ✦ Fairview Architectural Suite Windows
- ✦ Godfrey Hirst Flooring
- ✦ Landscaping Package Available
- ✦ LED Lighting
- ✦ Smeg Appliances

Auckland • Hamilton • Tauranga • Marlborough • Nelson • West Coast • Canterbury • Central Otago

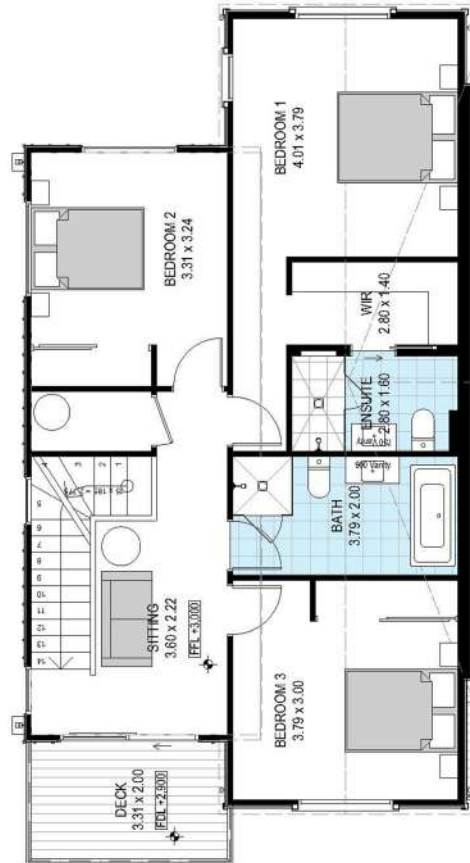
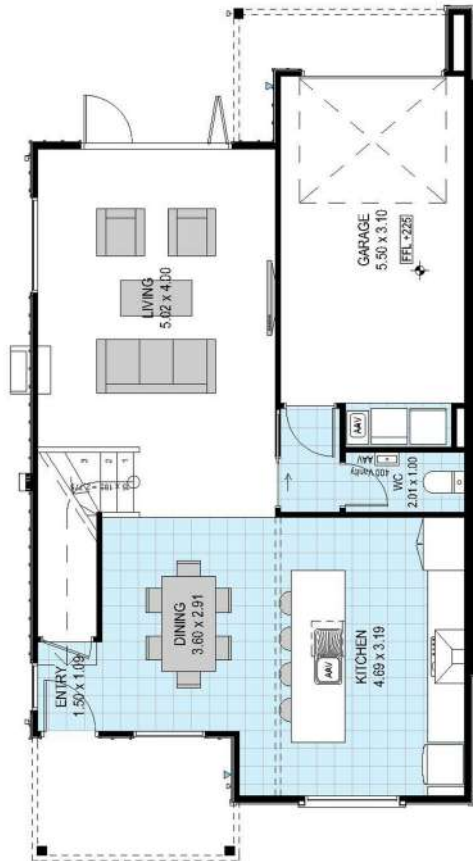
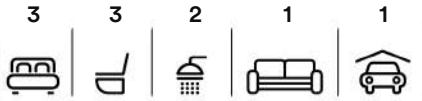
bringing you **more.**

03 354 0166 **mikegreerhomes.co.nz**

Halswell Commons Unit 2, Lot 6 Halswell Commons

dwelling size
164 m²

section size
294 m²



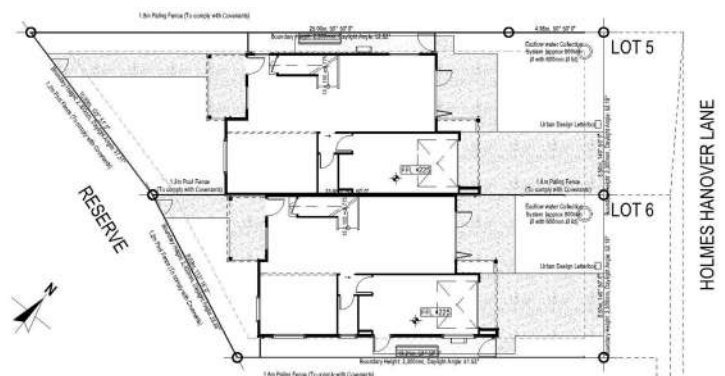
First Floor Plan

+ **Free Design**
With over 700 base plans you may be looking at the one that's absolutely perfect for you, or you may wish to modify it to make it your own. Our highly experienced team of in-house designers can customise each plan to suit your individual site, budget and style.

+ **Fixed Price**
Our fixed price contracts are just that – fixed. There are no surprises – all landscaping, fencing, driveways and floor coverings are included. You pay a deposit and nothing further until completion.

+ **Quality Assurance**
Our reputation for quality is as important to us as it is to you. With 25 years of award-winning experience, a team of fully qualified contractors, and a comprehensive Quality Assurance programme, you can trust that your home is constructed with care and professionalism.

+ **Specifications**
Our wide array of specifications is where your home truly comes to life. Choose from a range of fixtures and fittings from today's most reputable brands. Let your imagination run wild or if you prefer we can suggest options to suit your needs and style.



Disclaimer While every reasonable effort has been made by Mike Greer Homes to ensure the information correctly illustrates the dwelling and section, this material may only be used by the Purchaser for illustrative and guidance purposes. Mike Greer Homes accepts no responsibility for any differences, errors or omissions which may become apparent during or on completion of the dwelling.